

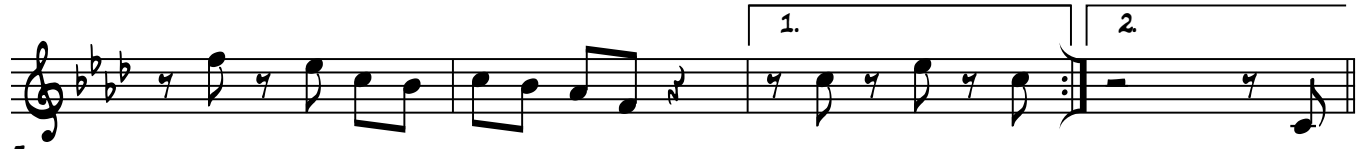
Full House

WES MONTGOMERY

ARR. 6EQUJ5

INTRO

FMIN⁷



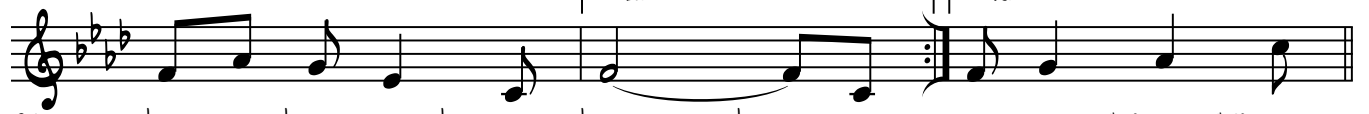
A FMIN⁷ B^b13 FMIN⁷ B^b13 FMIN⁹ B^b7 FMIN⁷ C⁷(#9)



11 FMIN⁷ B^b13 FMIN⁹ B^b7 FMIN⁷ B^b13



19 FMIN⁷



B B^bMIN⁷ E^b7 A^bMAJ⁷ D^b7 G^bMAJ⁷ BMAJ⁷ GMIN⁷(b5) C⁷(b9)



C 28 FMIN⁹ B^b13 FMIN⁷ B^b7 FMIN⁹ B^b13



36 FMIN⁷ C⁷(#9) FMIN⁷ B^b7 FMIN⁷ B^b7



42 FMIN⁹ B^b13 FMIN⁷ FMIN⁷



48

SOLOS AABC, OUTRO: PLAY INTRO AND VAMP ON A CHORDS