

TUNES FROM THE DANCING MASTER

arranged for Descant (Soprano) Recorder Solo by Monica Dewey

THE CORONATION DAY

Quick march



THE MAIDEN'S BLUSH¹⁾

Not too fast



1) For piano version (which can be used as accompaniment) see English Dance Tunes (Schott & Co.)
Copyright 1953 by Schott & Co. Ltd. London.

S & Co. Ltd. 5687

2

THE HAPPY CLOWN¹⁾

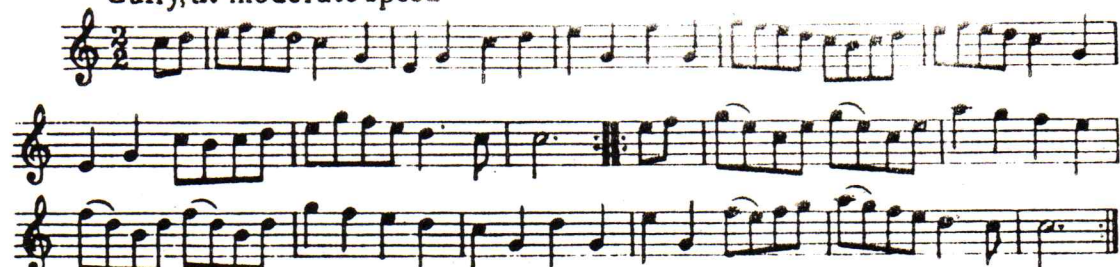
(Used in the Beggar's Opera: "I'm like a skiff")

Brightly



THE BRITISH TOPER¹⁾

Gaily, at moderate speed



1) For accompaniment see note on page 1.

S & Co. Ltd. 5687

A TRIP TO THE BOAR

3

Gracefully, at moderate speed

Musical notation for 'A Trip to the Boar' in G major, 3/4 time. It consists of four staves of music. The first staff begins with a treble clef, a key signature of one sharp (F#), and a 3/4 time signature. The melody is characterized by grace notes and slurs, indicating a graceful and moderate tempo.

ABOUT SHIP

Firmly and briskly

Musical notation for 'About Ship' in G major, 3/4 time. It consists of two staves of music. The first staff begins with a treble clef, a key signature of one sharp (F#), and a 3/4 time signature. The melody features triplets and slurs, indicating a firm and brisk tempo.

S. & Co. Ltd. 5087

4

OLD NOLL'S JIGG

With well marked jig-rhythm, not too fast

Musical notation for 'Old Noll's Jigg' in G major, 4/4 time. It consists of four staves of music. The first staff begins with a treble clef, a key signature of one sharp (F#), and a 4/4 time signature. The melody is characterized by a well-marked jig rhythm, with slurs and accents.

VIRGIN PULLETS

Fast and gay

Musical notation for 'Virgin Pullets' in G major, 3/4 time. It consists of two staves of music. The first staff begins with a treble clef, a key signature of one sharp (F#), and a 3/4 time signature. The melody is fast and gay, featuring slurs and accents.

S. & Co. Ltd 5087

ENGLISH PASBY

5

Rather slow and graceful

Musical notation for 'English Pasby' consisting of three staves. The first staff is the melody in treble clef, 3/4 time, with a key signature of one sharp (F#). The second and third staves are accompaniment parts, also in treble clef, 3/4 time, with a key signature of one sharp. The piece concludes with a double bar line and repeat dots.

THE SIEGE OF LIMERICK ¹⁾

Confident and fast

Musical notation for 'The Siege of Limerick' consisting of three staves. The first staff is the melody in treble clef, 3/4 time, with a key signature of one sharp (F#). The second and third staves are accompaniment parts, also in treble clef, 3/4 time, with a key signature of one sharp. The piece concludes with a double bar line and repeat dots.

1) For accompaniment see note on page 1.

S. & Co. Ltd 5887

6

COTTEY HOUSE

Smoothly, not too fast

Musical notation for 'Cottey House' consisting of four staves. The first staff is the melody in treble clef, 4/4 time, with a key signature of one sharp (F#). The second, third, and fourth staves are accompaniment parts, also in treble clef, 4/4 time, with a key signature of one sharp. The piece concludes with a double bar line and repeat dots.

AMARYLLIS

Gaily

Musical notation for 'Amaryllis' consisting of two staves. The first staff is the melody in treble clef, 3/4 time, with a key signature of one sharp (F#). The second staff is the accompaniment part, also in treble clef, 3/4 time, with a key signature of one sharp. The piece concludes with a double bar line and repeat dots.

S. & Co. Ltd. 5887

THE HIGHLANDER'S WEDDING ¹⁾

7

With well marked jig rhythm

Musical notation for 'THE HIGHLANDER'S WEDDING' consisting of three staves of music in 6/8 time. The first staff begins with a treble clef, a key signature of one flat (B-flat), and a 6/8 time signature. The melody is characterized by a well-marked jig rhythm with frequent eighth and sixteenth notes.

Mr. BEVERIDGE'S MAGGOT

Rather slowly

Musical notation for 'Mr. BEVERIDGE'S MAGGOT' consisting of three staves of music in 3/4 time. The first staff begins with a treble clef, a key signature of one flat (B-flat), and a 3/4 time signature. The tempo is marked 'Rather slowly'. The melody features a mix of quarter and eighth notes.

1) For accompaniment see note on page 1.

S. & Co. Ltd. 5687

8

THE ROVER REFORMED

Not too fast

Musical notation for 'THE ROVER REFORMED' consisting of four staves of music in 3/4 time. The first staff begins with a treble clef, a key signature of one flat (B-flat), and a 3/4 time signature. The tempo is marked 'Not too fast'. The melody includes a trill marked with a star symbol (*) in the second measure of the second staff.

PORTABELLA

Thoughtfully

Musical notation for 'PORTABELLA' consisting of two staves of music in 3/4 time. The first staff begins with a treble clef, a key signature of one flat (B-flat), and a 3/4 time signature. The tempo is marked 'Thoughtfully'. The melody is composed of quarter and eighth notes.

S. & Co. Ltd. 5687

POOR ROBIN'S MAGGOT

9

(Used in the Beggar's Opera: "If the heart of a man")

With singing tone

Musical score for 'Poor Robin's Maggot' in 3/4 time. It consists of three staves of music. The first staff is the melody, starting with a treble clef and a key signature of one flat. The second and third staves provide accompaniment. The piece concludes with a double bar line and repeat dots.

THE TUNEFUL NIGHTINGALE

At moderate speed

Musical score for 'The Tuneful Nightingale' in 3/4 time. It consists of three staves of music. The first staff is the melody, starting with a treble clef and a key signature of one flat. The second and third staves provide accompaniment. The piece concludes with a double bar line and repeat dots.

S. & Co. Ltd. 5687

10

SPANISH GIPSIE

Fast and light

Musical score for 'Spanish Gipsie' in 2/4 time. It consists of two staves of music. The first staff is the melody, starting with a treble clef and a key signature of one sharp. The second staff provides accompaniment. The piece concludes with a double bar line and repeat dots.

GREENSLEEVES AND YELLOW LACE¹⁾

Slowly, with feeling

Musical score for 'Greensleeves and Yellow Lace' in 3/4 time. It consists of three staves of music. The first staff is the melody, starting with a treble clef and a key signature of one sharp. The second and third staves provide accompaniment. The piece concludes with a double bar line and repeat dots.

1) For accompaniment see note on page 1.

S. & Co. Ltd. 5687

THE BEAUX STRATAGEM

Fast and saucy

Musical notation for the piece 'Fast and saucy'. It consists of three staves of music in 3/4 time. The first staff begins with a treble clef and a key signature of one sharp (F#). The music is characterized by a lively, rhythmic melody with many eighth and sixteenth notes. A first ending bracket labeled '(br)' is placed over the second staff. The piece concludes with a double bar line and repeat dots.

MANAGE THE MISER

Firmly

Musical notation for the piece 'MANAGE THE MISER'. It consists of three staves of music in 3/4 time. The first staff begins with a treble clef and a key signature of one sharp (F#). The melody is more stately and rhythmic than the previous piece, featuring a mix of quarter and eighth notes. The piece ends with a double bar line and repeat dots.

S. & Co. Ltd. 5687

APLEY HOUSE

In lively time

Musical notation for the piece 'APLEY HOUSE'. It consists of two staves of music in 3/4 time. The first staff begins with a treble clef and a key signature of one sharp (F#). The music is lively and rhythmic, with a melody of eighth and sixteenth notes. The piece concludes with a double bar line and repeat dots.

THE PHENIX¹⁾

Sprightly

Musical notation for the piece 'THE PHENIX'. It consists of four staves of music in 3/4 time. The first staff begins with a treble clef and a key signature of one sharp (F#). The melody is sprightly and rhythmic, featuring a mix of eighth and sixteenth notes. The piece concludes with a double bar line and repeat dots.

1) For accompaniment see note on page 1.

S. & Co. Ltd. 5637

FLY BOAT

13

Rather plaintively

Musical notation for 'FLY BOAT' in 3/4 time, featuring a treble clef and a key signature of two flats. The piece consists of four staves of music. The first staff begins with a treble clef and a key signature of two flats. The second staff contains a repeat sign. The third and fourth staves continue the melody.

SCOTLAND

Steady, not fast

Musical notation for 'SCOTLAND' in 2/4 time, featuring a treble clef and a key signature of one sharp. The piece consists of two staves of music. The first staff begins with a treble clef and a key signature of one sharp. The second staff contains a repeat sign.

S. & Co. Ltd. 5687

14

THE HARE'S MAGGOT

Bold, not too fast

Musical notation for 'THE HARE'S MAGGOT' in 2/4 time, featuring a treble clef and a key signature of one sharp. The piece consists of three staves of music. The first staff begins with a treble clef and a key signature of one sharp. The second and third staves continue the melody.

NEVER LOVE THEE MORE

With singing tone

Musical notation for 'NEVER LOVE THEE MORE' in 2/4 time, featuring a treble clef and a key signature of one sharp. The piece consists of three staves of music. The first staff begins with a treble clef and a key signature of one sharp. The second and third staves continue the melody.

S. & Co. Ltd. 5687

HOLE IN THE WALL

Slowly, with dignity

The musical score for 'Hole in the Wall' consists of three staves of music. The first staff is the melody in treble clef, 2/4 time, with a key signature of one sharp (F#). The second and third staves provide accompaniment in treble clef, featuring a steady eighth-note accompaniment pattern.

SYLVIA'S SERENADE ¹⁾

Lightly, not too fast

The musical score for 'Sylvia's Serenade' consists of three staves of music. The first staff is the melody in treble clef, 3/4 time, with a key signature of one flat (Bb). The second and third staves provide accompaniment in treble clef, featuring a steady eighth-note accompaniment pattern.

¹⁾ For piano accompaniment see note on page 1. S. & Co. Ltd. 5687

THE CONSTANT LOVER ¹⁾

15

Gaily

The musical score for 'The Constant Lover' consists of three staves of music. The first staff is the melody in treble clef, 2/4 time, with a key signature of one flat (Bb). The second and third staves provide accompaniment in treble clef, featuring a steady eighth-note accompaniment pattern.

'TWAS WITHIN A FURLONG OF EDINBORO' TOWN ²⁾

Slowly

The musical score for 'Twas within a Furlong of Edinboro' Town' consists of three staves of music. The first staff is the melody in treble clef, 3/4 time, with a key signature of one flat (Bb). The second and third staves provide accompaniment in treble clef, featuring a steady eighth-note accompaniment pattern.

¹⁾ For accompaniment see note on page 1.

²⁾ For words and accompaniment see: Voice and Keyboard No. 4 (Schott & Co. London)

S & Co. Ltd. 5687