

# Alice in Wonderland

from Walt Disney's ALICE IN WONDERLAND

Words by Bob Hilliard  
Music by Sammy Fain

Medium

**A**

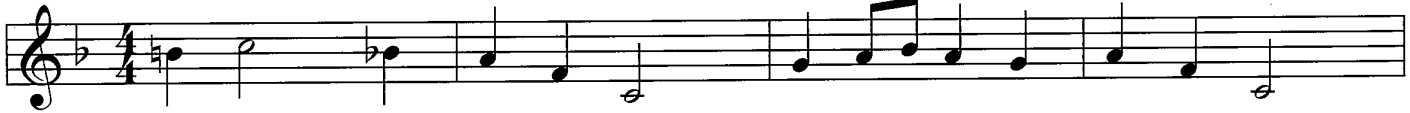
Gm7 C7

F Ma7

E<sup>ø</sup>7 Gm7

A7 C7

Dm7 F Ma7



Al - ice in Won - der - land, how do you get to Won - der - land?

G m7

C7

F Ma7

Dm7

G m7

C7

F Ma7



O - ver the hill or un - der - land or just be - hind the tree.

**A<sup>1</sup>**

Gm7 C7

F Ma7

E<sup>ø</sup>7 Gm7

A7 C7

Dm7 F Ma7

G m7

C7



When clouds go roll - ing by, they roll a - way and leave the sky. Where is the land be -

F Ma7

Dm7

B<sup>ø</sup>7

E7

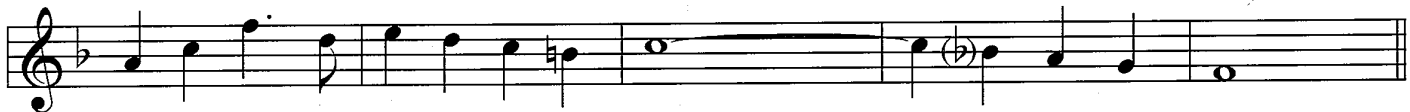
A m7

D7

G m7

C7

F Ma7



yond the eye that peo - ple can - not see? Where can it be?

**B**

G m7

C7

F Ma7

D m7

G m7

C7

F Ma7



Where do stars go? Where is the cres - cent moon? They

B<sup>ø</sup>7

E7b9

A m7

D7

G m7

C7



must be some - where in the sun - ny af - ter - noon.

**A<sup>2</sup>**

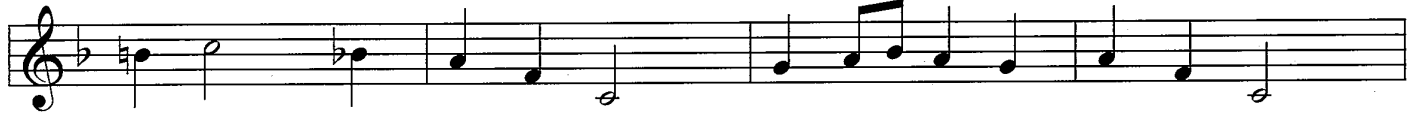
Gm7 C7

F Ma7

E<sup>ø</sup>7 Gm7

A7 C7

Dm7 F Ma7



Al - ice in Won - der - land, where is the path to Won - der - land,

G m7

C7

F Ma7

A<sup>b</sup>7

G m7

C7

F Ma7



o - ver the hill or here or there? I won - der where.