

# SMOKE GETS IN YOUR EYES

G Bm7 B $\flat$  $\emptyset$  Am7 D7 G G+/B C $\Delta$ 7 C $\sharp$  $\emptyset$

They asked me how I knew. my true love was true. I of course rep-

Bm7/D Em7 Am7 D7 G Am7 D7

lied something here in side can-not be - di nide.

G Bm7 B $\flat$  $\emptyset$  Am7 D7 G G+/B

They said some-day you'll find. All who love are blind.

C $\Delta$ 7 C $\sharp$  $\emptyset$

When your heart's on

Bm7/D Em7 Am7 D7 G Fm7 B $\flat$ 7

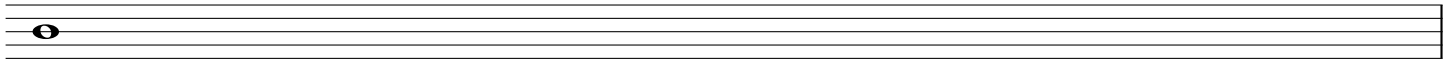
fire. you must re - a - lize. smoke gets in your eyes.

E $\flat$  $\Delta$ 7 Gm7 C7 Fm7 F $\flat$  $\emptyset$

So I chaffed then and I gai - ly laughed to think they would doubt my

Fm7

Bb7



love.

E $\flat$  $\Delta$ 7

Cm

D7

Bm7

E7

Am7

D7



Yet to-day my love has flown a - way. I am with - out my love.

G

Bm7

B $\flat$  $\emptyset$

Am7

D7

G

G+/B

C $\Delta$ 7

C $\sharp$ o7



Now laugh-ing friends de - ride. Tears I can not hide. So I smile and

Bm7/D

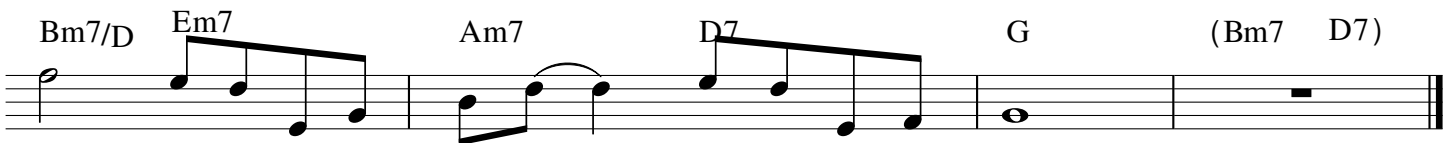
Em7

Am7

D7

G

(Bm7 D7)



say. When a love-ly flame dies, Smoke gets in your eyes.