

Voice

Light My Fire

Moderately ♩ = 126

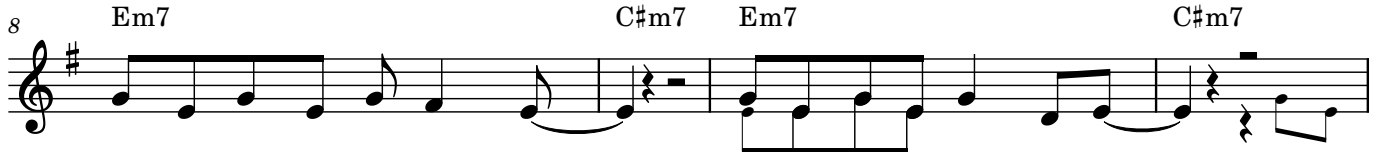
D A C F B^b
2

Em7

C#m7



1. You know that it would be un - true, you
(2.) time to hes - i - tate is through. No



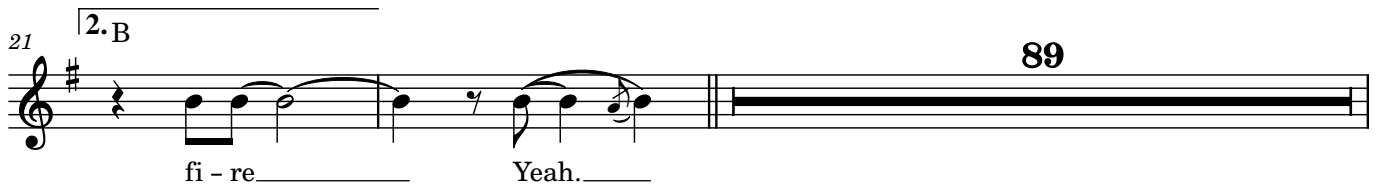
know that I would be a liar. If I was to say to you
time to wal - low in the mire. Try now, we can on - ly lose and our



girl, we could-n't get much high - er. Come on ba - by, light my fire.
love be - come a fu - n'ral pyre.

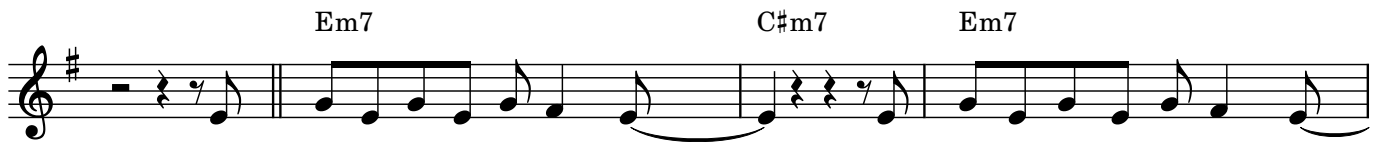


Come on ba - by, light my fire. Try to set the night on fi - re 2. The

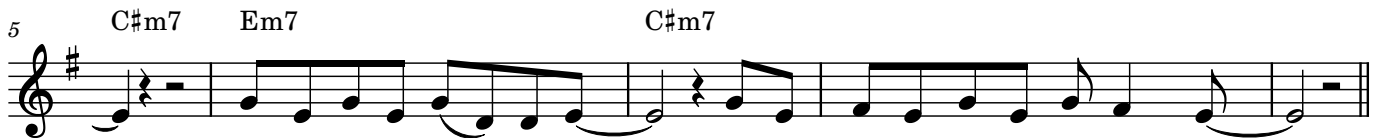


fi - re Yeah.

89

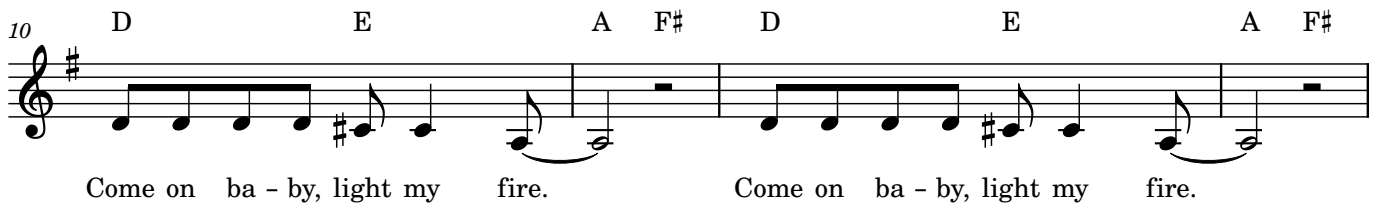


3. The time to hes - i - tate is through. No time to wal - low in the mire.



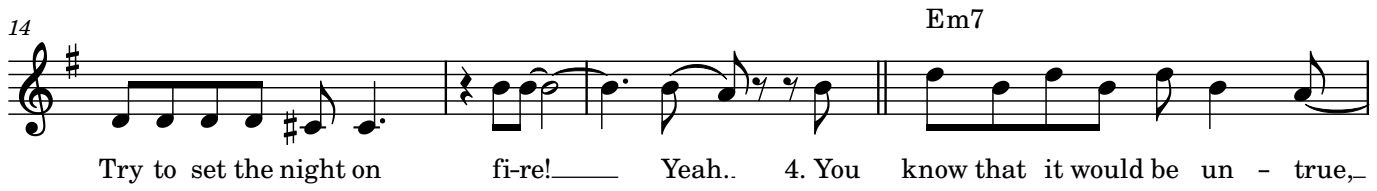
Try now we can on - ly lose and our love be - come a fu - n'ral pyre.

10 D E A F# D E E A F#



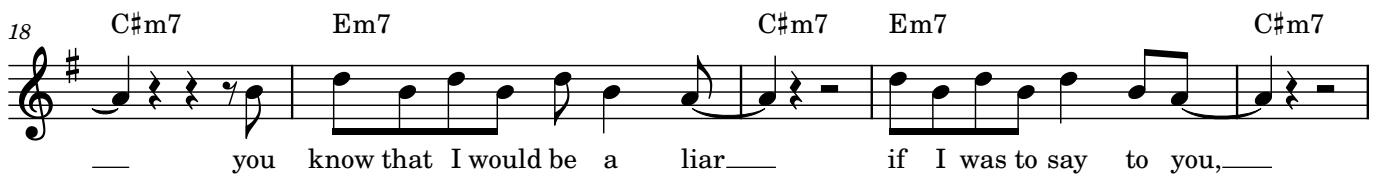
Come on ba - by, light my fire. Come on ba - by, light my fire.

14 Em7



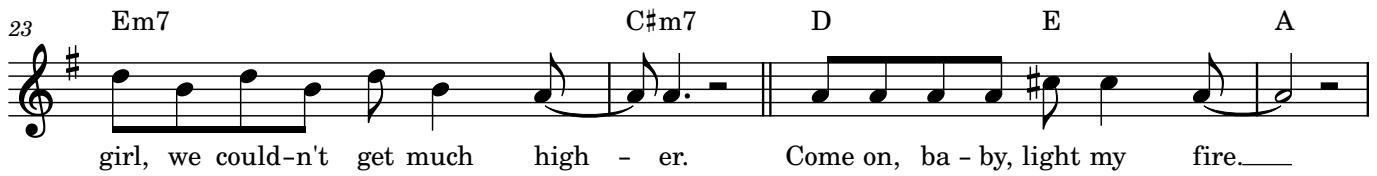
Try to set the night on fi-re! Yeah.. 4. You know that it would be un - true,

18 C#m7 Em7 C#m7 Em7 C#m7



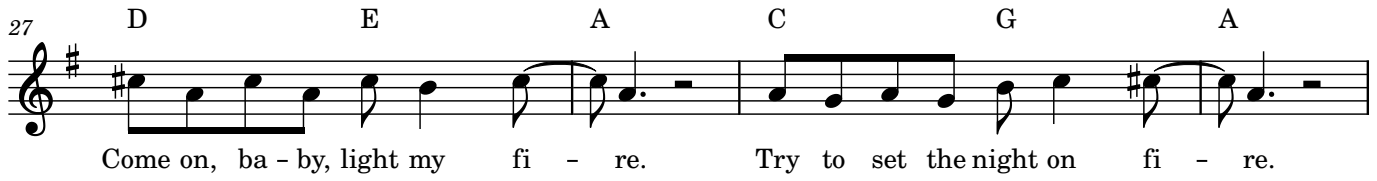
you know that I would be a liar if I was to say to you,

23 Em7 C#m7 D E A



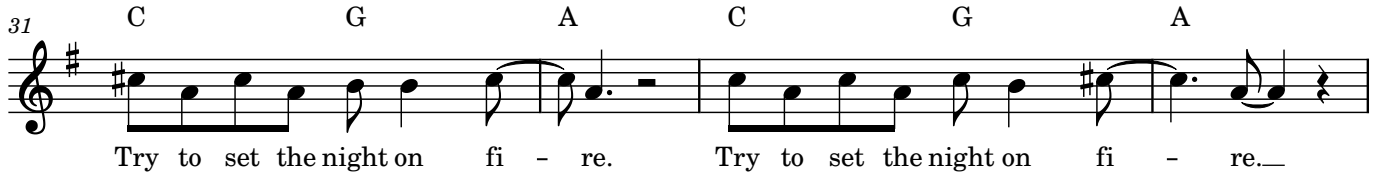
girl, we could-n't get much high - er. Come on, ba - by, light my fire.

27 D E A C G A



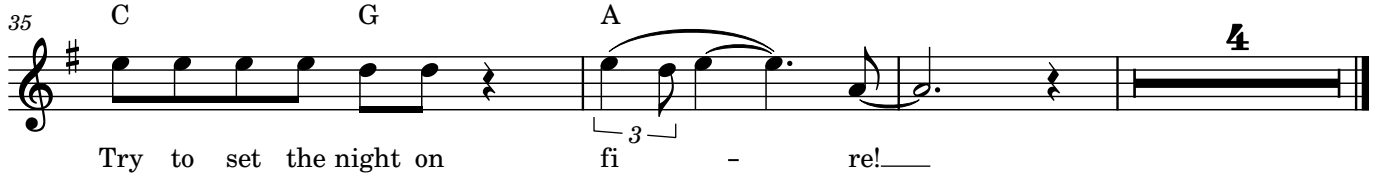
Come on, ba - by, light my fi - re. Try to set the night on fi - re.

31 C G A C G A



Try to set the night on fi - re. Try to set the night on fi - re.

35 C G A



Try to set the night on fi - re!